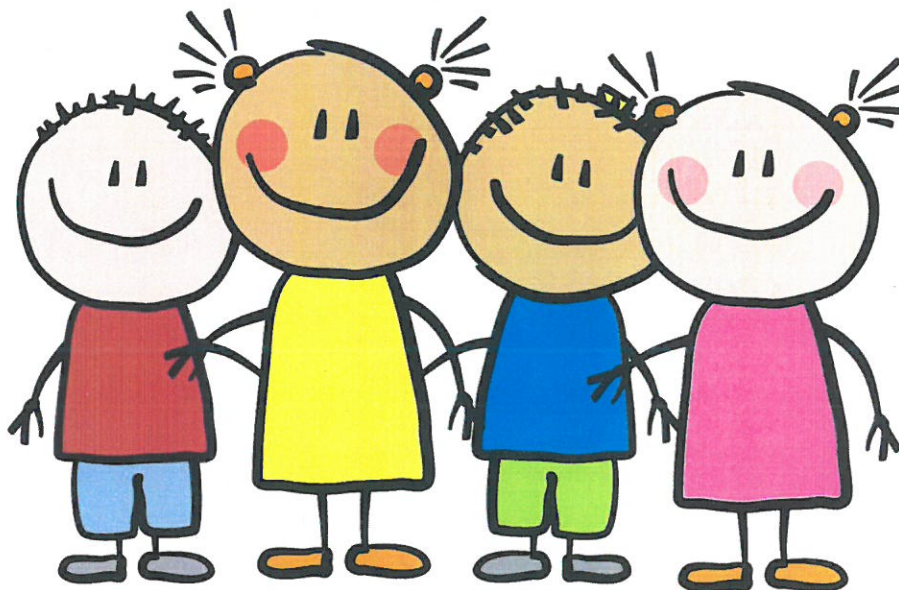




## CWL Potential Daycare Information

**Lu Verne (CWL) Elementary School**  
405 Hanna Ave  
Lu Verne, IA 50560  
515-882-3357

- ▶ The results of our Daycare Needs Assessment Survey are now posted online under the “Current News” section at <http://www.luverne.k12.ia.us> We would like to thank everyone that took part in our initial survey.
  
- ▶ We are continuing to investigate to see if more daycare is needed and we need your help. If you know of somebody or are somebody that may need daycare in the next two years please call or email us at school. We are looking to see how many children need daycare and the ages of those children. This does not mean you have to come to us, but allows us to figure out the space requirements and staffing requirements to run a state certified program. This does not guarantee that we will be able to have a daycare in our school but is the next step in this ongoing process.
  
- ▶ We ask that you answer the following questions by **March 20, 2019**:  
What is your name, number and email address (so we can keep you informed throughout this process)?  
How many children would you expect to possibly send to our program?  
What are the current ages of the children you would possibly send?
  
- ▶ If you are planning on needing daycare in the next year or two, please call 515-882-3357 or email Ally Thompson ([athompson@cwl-csd.org](mailto:athompson@cwl-csd.org)) at our school.
  
- ▶ If you have any other questions about this process please call Jon Hueser at 515-882-3357 or email him at [jhueser@cwl-csd.org](mailto:jhueser@cwl-csd.org). Thank you for supporting our students and district!



It is the policy of the Lu Verne Community School District not to illegally discriminate on the basis of age (for employment), race, creed, national origin, color, marital status (for programs), sexual orientation, religion, gender/sex, socio-economic status (for programs), gender identity or physical/mental disability in its educational programs and its employment practices. There is a grievance procedure for processing complaints of discrimination. If you have questions or a grievance related to this policy please contact the district's Equity Coordinator, Tom Fey, Asst Admin, 405 Hanna Ave, Lu Verne, IA 50560, 515-882-3357, [tfey@luverne.k12.ia.us](mailto:tfey@luverne.k12.ia.us)